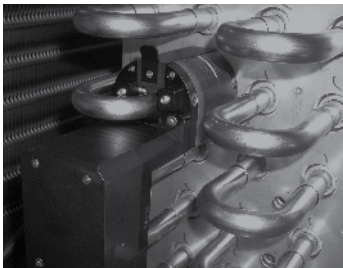




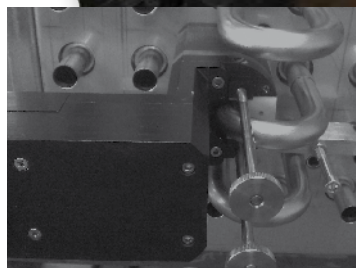
HX 16 - Open weld heads especially made for heat exchanger applications!



Optimum solution for welding pre-mounted elbows. Smallest space requirement thanks to compact design.



Highly durable thanks to water-cooled earth plate and rotor housing.



Horizontal, vertical and tilted welding positions are possible.



Simple and fast assembly of the weld heads on the tube. Self supporting weld head.

Open orbital weld heads HX 16 series

Open orbital weld heads HX 16,HX 16S,HX 16L

Ideal for applications with the smallest space availability thanks to their compact design.

Benefits:

- Optimum solution for welding pre-mounted elbows.
- Smallest space requirement thanks to compact design.
- Very robust and ergonomic design.
- Simple and fast assembly of the weld heads on the tube.
- Self supporting weld head

To be able to operate the weld heads, clamping jaws and a suitable earth cable are also necessary, which are not included in the standard delivery and must be ordered separately.



Open weld head HX 16

Electrode Ø 1,6 [mm]

Minimum spacing between the tubes Formula: $\frac{\text{Holder diameter} - \text{Tube OD}}{2} + 2$

Article	Tube OD [mm]	Holder module Ø [mm]	Code		kg
Open weld head HX 16	12,7 - 16*	60	845 000 001		1,500
Open weld head HX 16S	12,7 - 16*	60	846 000 001		1,500
Open weld head HX 16L	12,7 - 16*	60	847 000 001		1,500

* Smaller diameters on request.

Clamping jaws for HX 16

Ideal for applications with the smallest space availability

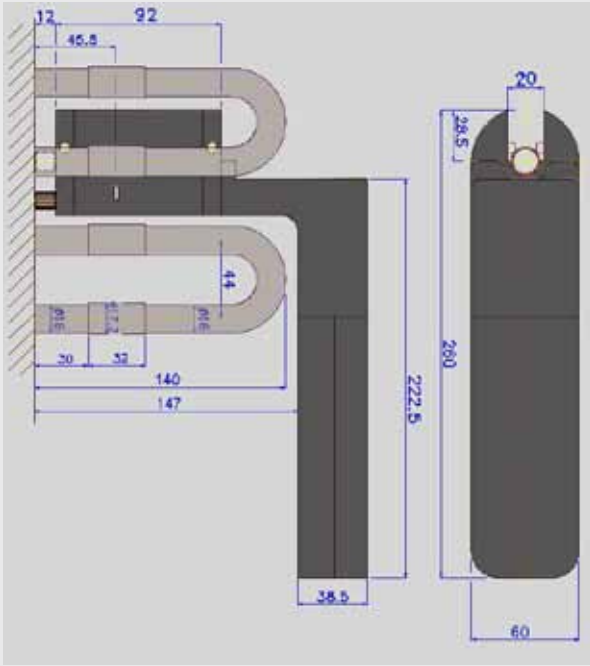
Article	Tube OD [mm]	Holder module Ø [mm]	Code		kg
Clamping jaws for HX 16	12,7 - 16	60	845 002 001		-



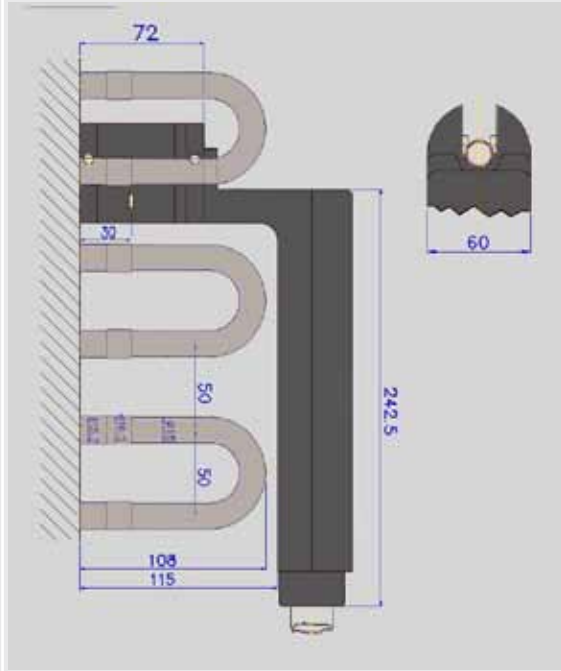
Clamping jaws for HX16

Dimensions HX 16

HX 16



HX 16S



HX 16L

